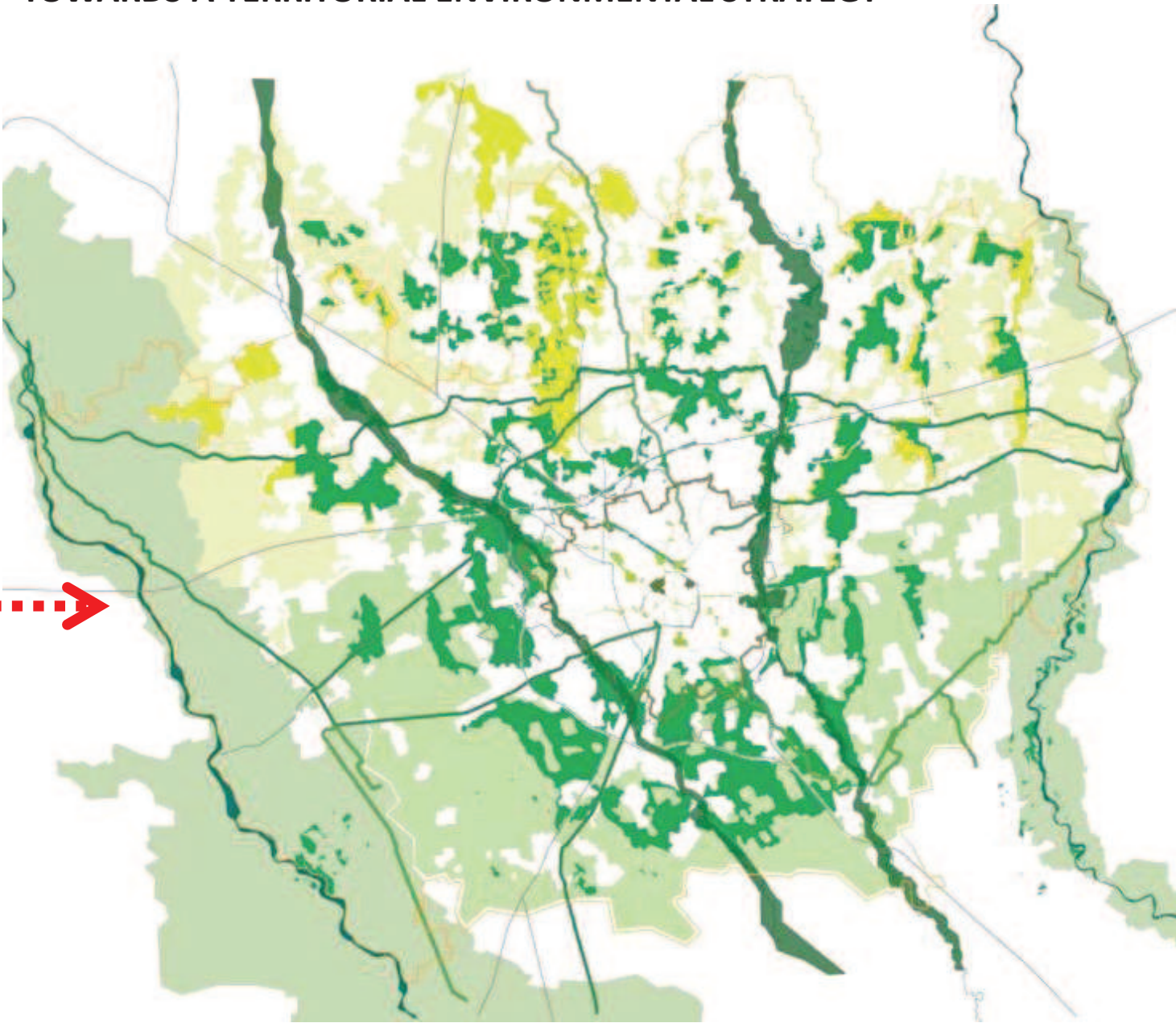


OUTSIDE THE URBAN BORDERS > TOWARDS A TERRITORIAL ENVIRONMENTAL STRATEGY

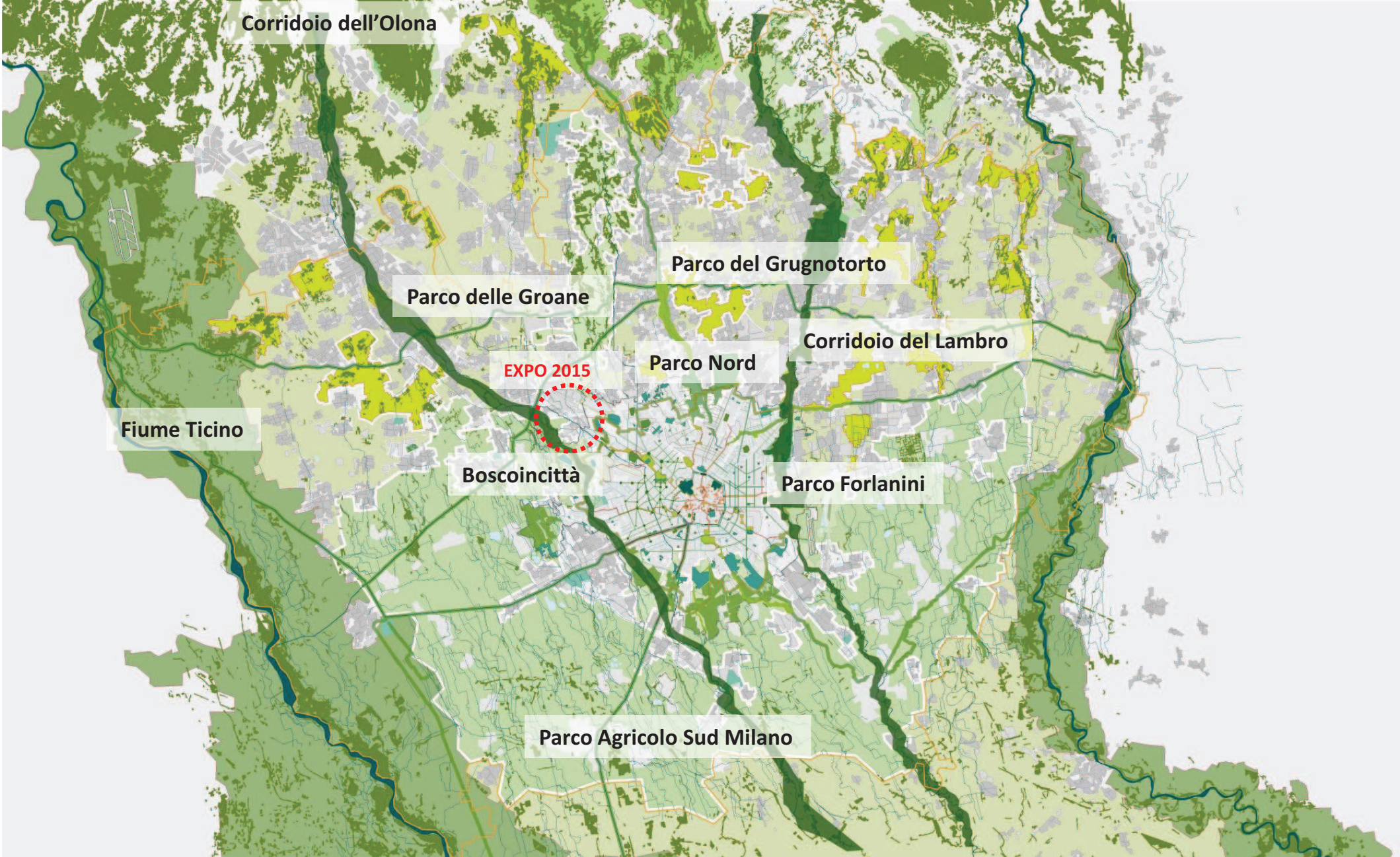


FROM MILAN CITY...



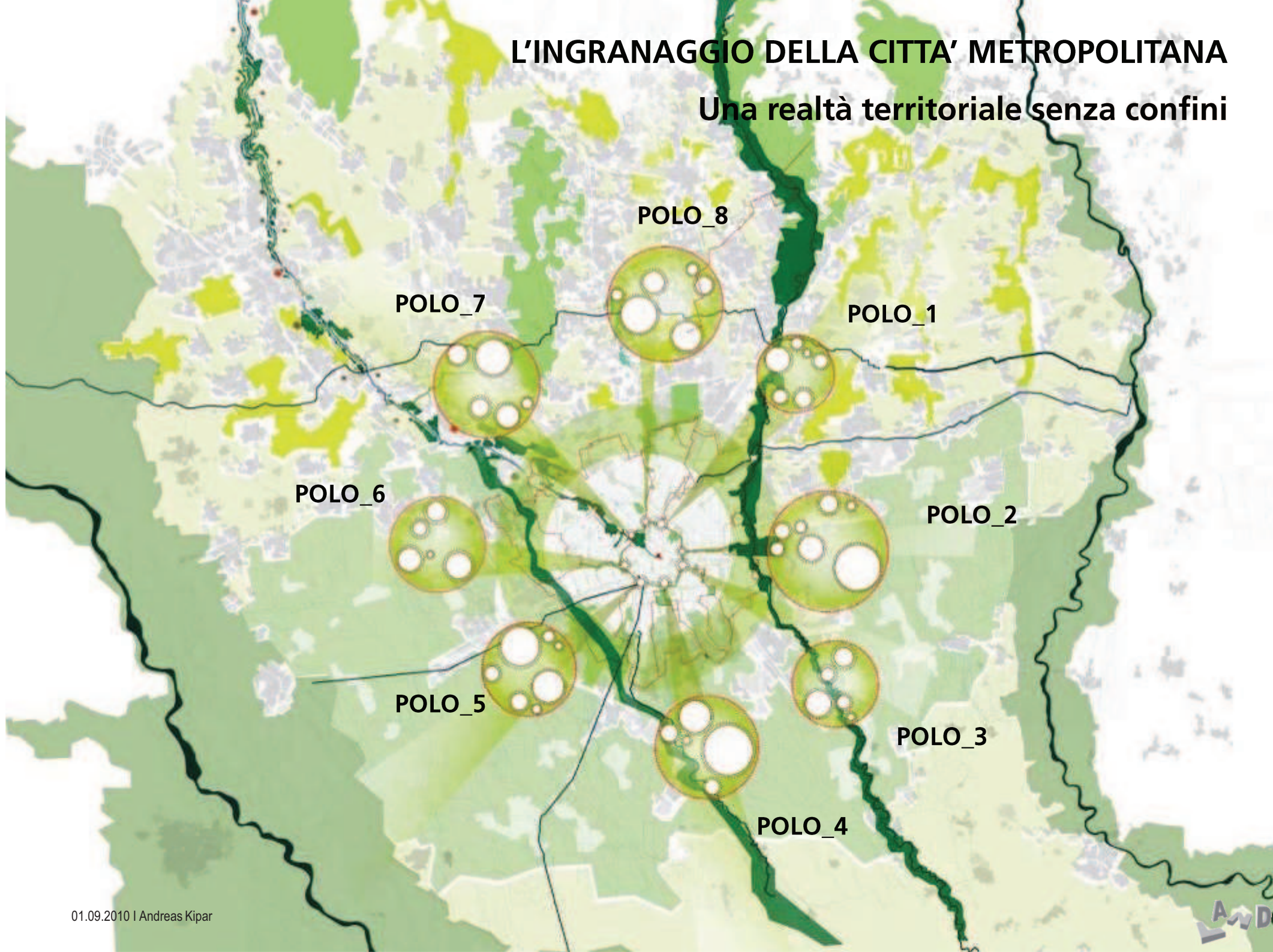
... TO AN ENVIRONMENTAL AND TERRITORIAL SYSTEM

THE URBAN EMPTYNESS > THE MAIN STRUCTURE OF MILAN LANDSCAPE



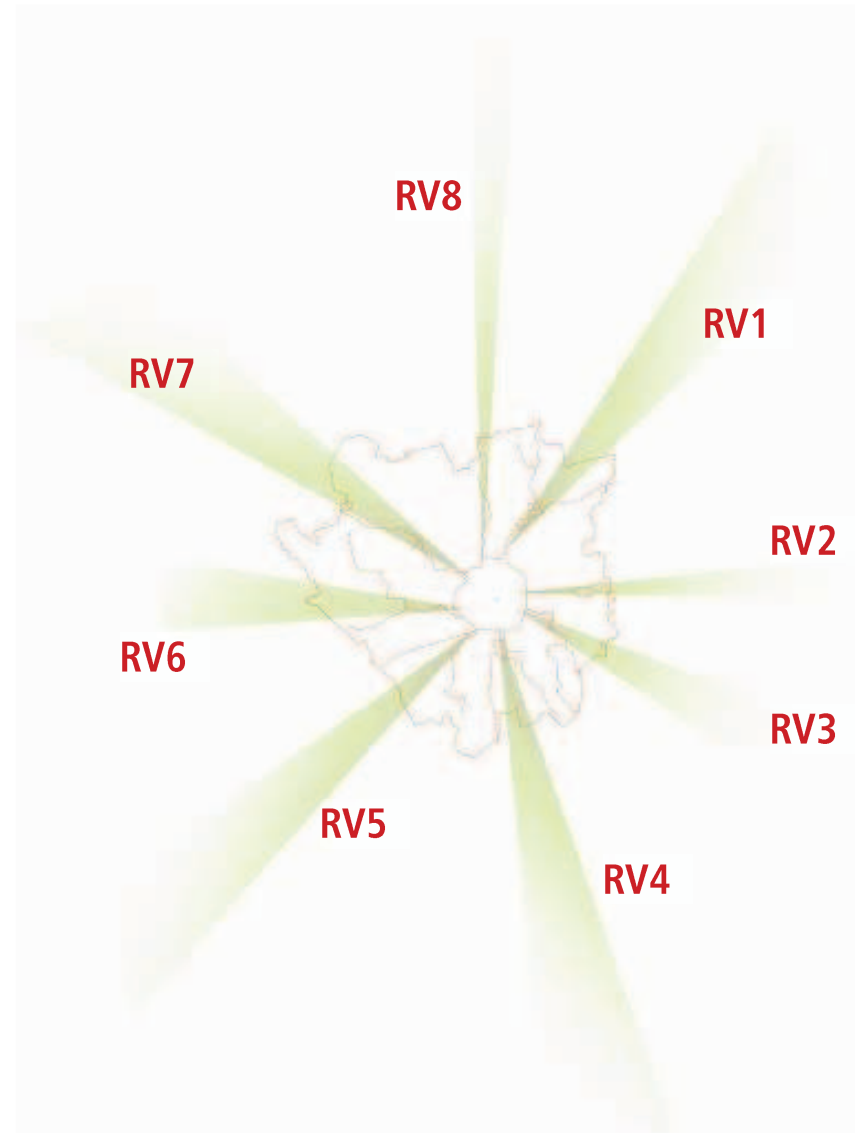
L'INGRANAGGIO DELLA CITTA' METROPOLITANA

Una realtà territoriale senza confini



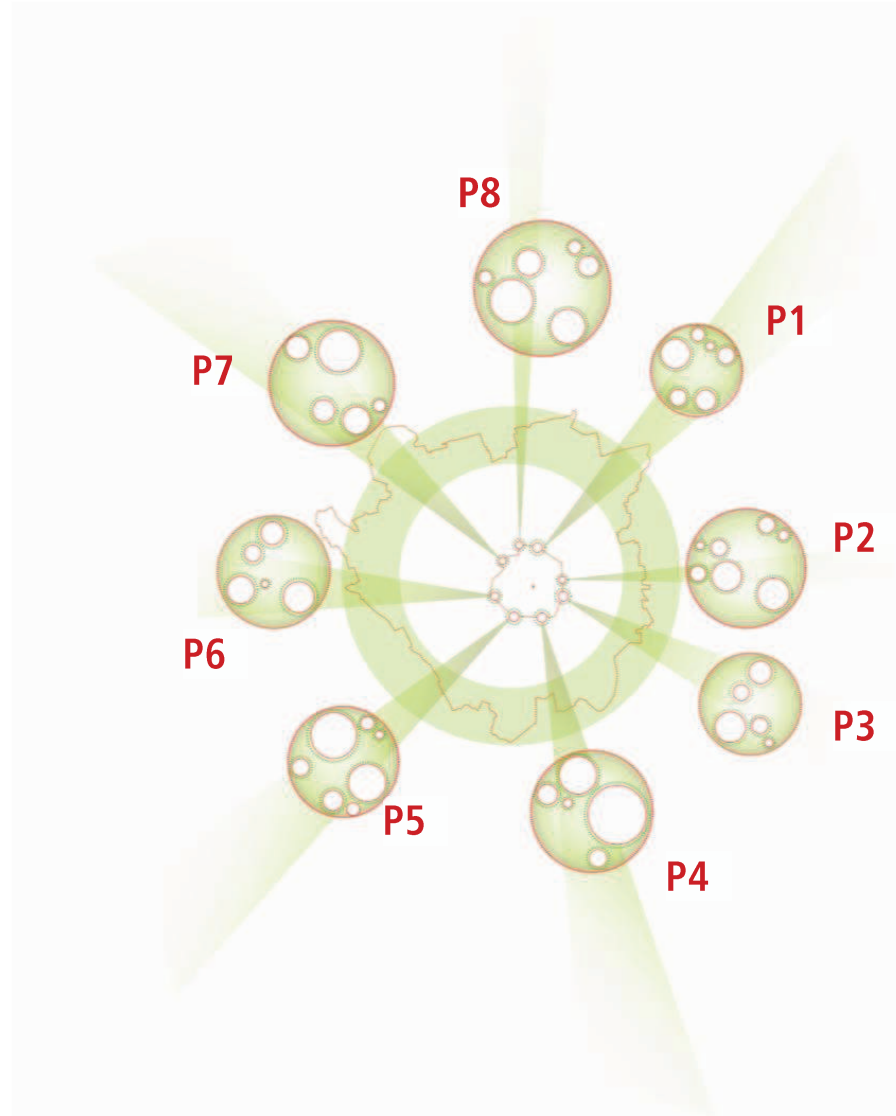
THE GREEN RAYS GO OUT OF MILANO...

The rays **funnel** towards the **Comuni** of the first and the second ring ...



...THEY INTERCEPT THE DEVELOPMENT POLES OF THE METROPOLITAN AREA...

... intercepted by the new poles of development and by the metropolitan Parks ...

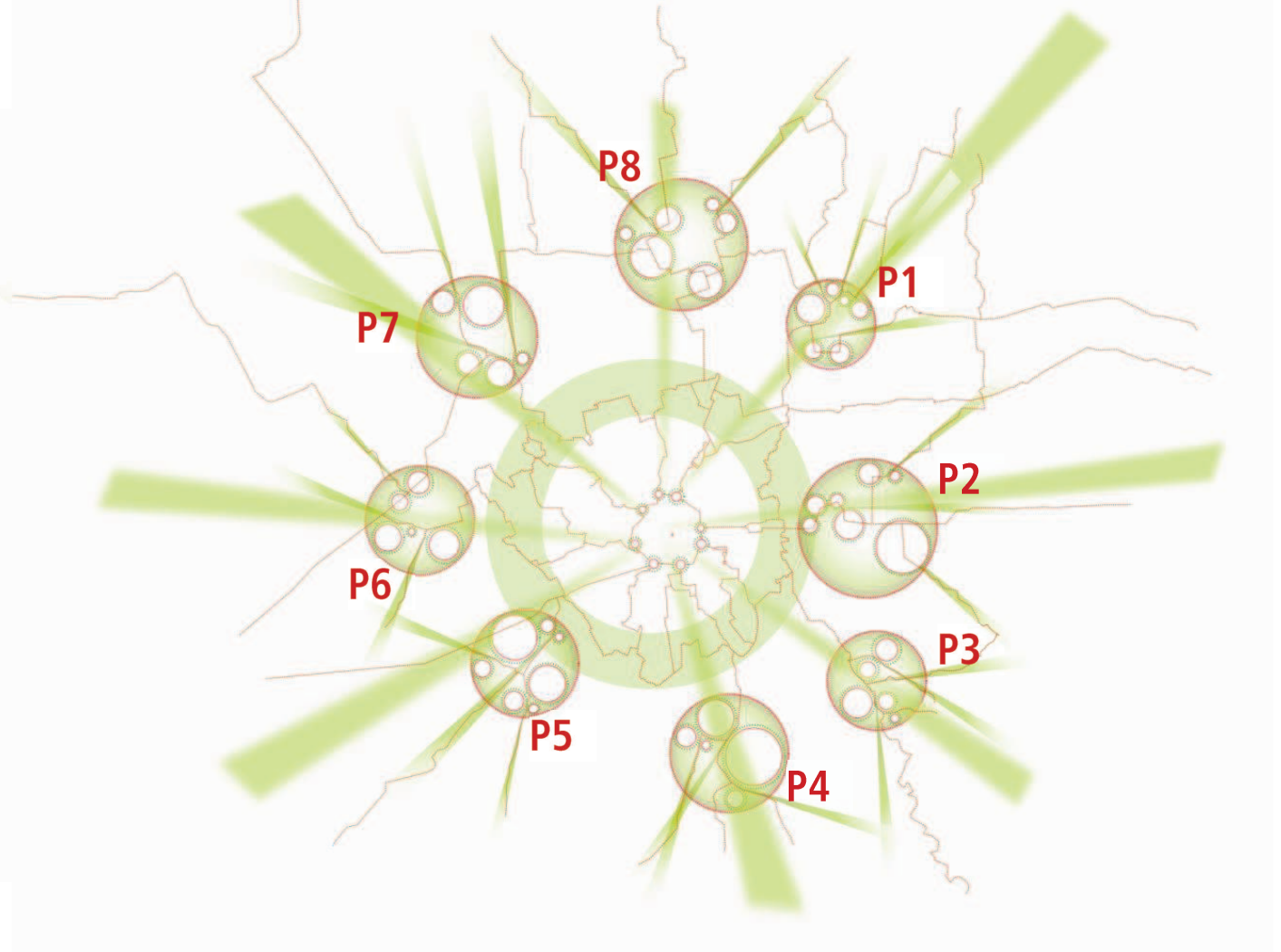


THAT AS MULTIPLIERS, REPRODUCE THEM IN THE WHOLE MILANO REGION

These poles, as a **multiplier**, reproduce them in the whole Milan region

32 INTERESTED MUNICIPALITIES

778.000 INHABITANTS



P1_Il polo della media valle del Lambro

Brugherio
Monza

Abitanti: 153.000

P2_Il polo del benessere

Pioltello
Segrate
Peschiera Borromeo
Rodano

Abitanti: 97.000

P3_Il polo della natura fluviale

Mediglia
Colturano
San Giuliano Milanese

Abitanti: 47.000

P4_Il polo del Sud

Opera
Locate Triulzi
Pieve Emanuele

Abitanti: 38.000

P5_Il polo dei navigli

Buccinasco
Assago
Zibido san Giacomo
Trezzano sul Naviglio

Abitanti: 60.000

P6_Il polo delle risaie

Settimo Milanese
Cornaredo
Bareggio
Cusago

Abitanti: 60.000

P7_Il polo dell'Expo

Rho
Pero
Arese
Garbagnate Milanese
Lainate
Bollate

Abitanti: 160.000

P8_Il polo del Nord

Desio
Varedo
Nova Milanese
Paderno Dugnano
Muggio
Cinisello Balsamo

Abitanti: 163.000

THE TERRITORIAL GREEN RAYS

32 INTERESTED MUNICIPALITIES
778.000 INHABITANTS

